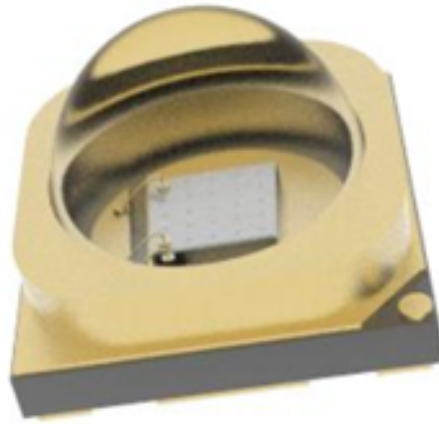
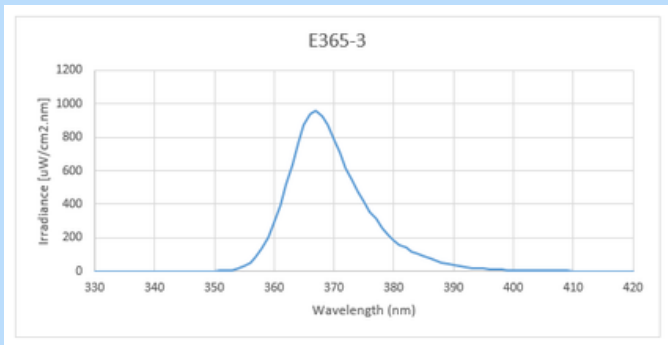


E365-3 UV-A LED



SPECIFICATIONS

- **Definition:** E365-3
- **Package:** Ceramic SMD3838
- **Peak Wavelength:** 365 nm
- **Radiant Flux:** 1110 – 2150 mW
- **Forward Voltage:** 3.2 – 4.0 V
- **Spectrum Half Width:** 10-12 nm
- **View Angle:** 60°
- **Rating:** T=25°C, IF=1000mA
- **Life Hours:** 10,000



Distance [mm]	Irradiance [uW/cm ²]	Irradiance [mW/cm ²]
25	54239.9	54.2399
50	13679.9	13.6799
100	3492.57	3.49257
200	906.471	0.906471
500	158.69	0.15869

Measurement condition: 3.6V, 800mA

NOTES FOR E365-3

- Optical output power's measurement tolerance: ±10%
- Voltage's measurement tolerance: ±0.1V
- Dominant wavelength's measurement tolerance: ±2nm
- (1 KHz; Duty Cycle: 1%); Maximum operating current: 1000mA

INSTALLATION AND HANDLING

1. **Do not touch the LED, contact will deposit oils that effect the normal operation/life.**
2. **Power: Reversing polarity may damage the device, confirm the positive and negative,**
3. **Strictly operate in accordance with electrical parameters, higher voltage will cause damage/degradation.**
4. **Avoid touching the LED with bare hands. Use anti static gloves or finger cots when handling LEDs.**
5. **Working surface should be clean, and well grounded. Include proper anti static protection.**
6. **Optical Hazard Risk: Avoid exposure to skin and eyes.**
7. **Heat Sink Required: Use a 1.6mm thick 20 mm² copper based heat sink or better.**
8. **Power supply is not included.**

Storage: LEDs should be kept at 10 to 50 °C and 30 to 65% RH (Relative Humidity). Hermetic sealing is recommended, reseal after opening to prevent oxidation.